

Year 9 Pathways



Making Your Choices
September 2026-2028

'Strong in action, gentle in manner'

A Message From the Headteacher

Dear Year 9,

You are approaching an important milestone in your education as you decide which subjects to study at examination level during Key Stage 4. This decision will affect your longer term study and career plans so it is important to take account of many factors when deciding. This is a good time to remind you that you must be in some form of education or training until the end of the academic year in which you turn 18. We hope that when you complete your GCSE programmes of study, you will remain in our highly successful Sixth Form to continue your studies.

This Pathways Booklet outlines the courses on offer at Key Stage 4, so please study the information carefully. Consider the idea that certain combinations of subjects provide a good foundation for further study, leading to broad career groups. At Key Stage 4, it is important not to restrict career options too much as interests often change over the next few years. This is why all students have to study core subjects such as English, Maths, Science, Religious Education, PSHE and Physical Education.

Your teachers will know you well by now, and their input will be helpful in making important decisions for your Key Stage 4 courses. Over the next few weeks you will have the opportunity to hear about all the subjects we offer.

During our Parents and Pathways Evening on 12th February you will be able to speak to teachers and ask any questions you may have about the courses available to you next year. Our Careers advisor, Mrs Woodruff, will also be available to offer additional advice, support and guidance.

I wish you all the very best during this exciting decision-making process, and please always remember that we are here to support and help you.

Mr Forsey



Key Stage 4 Curriculum

THE CORE CURRICULUM	THE OPTIONAL CURRICULUM
<p><i>English Language & English Literature GCSE</i></p> <p><i>Maths GCSE</i> <i>Combined Science GCSE</i></p> <p><i>Religious Education GCSE</i> <i>Physical Education & Personal Development</i></p>	<p><i>Options include:</i></p> <p><i>An extensive range of GCSEs</i></p> <p><i>A number of Level 2 Certificate qualifications, in subjects closely related to the workplace</i></p>

The optional subjects are a range of GCSE and Level 2 Certificate qualifications that are arranged into three blocks. We construct the blocks to maximise the number of students who can study at least two of their three first choice subjects.

There are different courses and pathways to be aware of when choosing GCSE options.

GCSEs

These are the most common type of Level 1 and 2 qualifications for KS4 and consist of formal exams and class work rather than a majority coursework-based qualification. These are graded 9-1. Please see the following page for more details on gradings.

Level 2 Certificates

These are work-related qualifications that are assessed through classroom-based assignments and an external examination. These courses are ideal for students who have a strong interest in the subject area and enjoy this method of learning and assessment. These are Level 2 courses which are graded Distinction*, Distinction, Merit or Pass and are equivalent to 9-4 grades.

Key Stage 4 Grading

New GCSE Grade Structure	Previous GCSE Grade Structure	Vocational Grades	
9 8 7	A*	L2*	
	A	L2D	
6 5 4	B	L2M	
	C	L2P	
3 2 1	D	L1D	L1P
	E	L1M	
	F G	L1P	



BTEC Vs GCSE

Level 2 BTEC qualifications are a well-established alternative to GCSEs and are recognised in the same way as other Level 2 courses. They sit at the same level as GCSEs on the national qualifications framework and are valued by colleges, sixth forms and employers. Choosing a Level 2 BTEC will not disadvantage students—these courses provide a rigorous, practical route that develops subject knowledge alongside transferable skills such as teamwork, communication and independent learning. For many students, a Level 2 BTEC is a strong preparation for further study and future careers.

Choosing the Right Pathway



Every student has their own individual strengths, so we have designed curriculum pathways to ensure that every student has:

- Access to the fullest possible range of subjects
- Access to courses that offer the best opportunities for them to achieve the highest possible grades
- Access to courses that best reflect their learning styles

Separate Sciences Pathway

- English and English Literature
- Mathematics
- RE
- Separate sciences
- (3 GCSEs in Chemistry, Physics and Biology)
- Humanities (History or Geography)
- Spanish

You might be better suited to Separate Sciences if you:

- Do well in science already and are confident with new and challenging ideas
- Are happy to revise more, because there's extra content and often a faster pace
- Like problem-solving and maths, especially in Physics and some Chemistry topics
- Are thinking about taking A-level Biology, Chemistry or Physics (or careers like medicine, engineering, veterinary science, dentistry, psychology, or science research)
- Are organised and motivated, and can keep up with three subjects at once

English Baccalaureate Pathway

- English and English Literature
- Mathematics
- RE
- Combined Science (a combination of Chemistry, Physics and Biology worth 2 GCSEs)
- 3 option subjects: Including a humanities subject and a language as part of this.

Core Curriculum Pathway

- English and English Literature
- Mathematics
- RE
- Combined Science (a combination of Chemistry, Physics and Biology worth 2 GCSEs)
- Option subject 1
- Option subject 2
- Option subject 3



Pathways identified above are simply recommendations: final decisions are made in partnership with parents and students.

Making Your Choices

Try to choose subjects....

- That you think you will enjoy and feel you are good at.
- That you may need for future education and/or your career path.
- That you are most likely to work enthusiastically in and succeed at.
- That provide balance and variety.



DO'S

- Talk to parents, carers, subject teachers, careers staff and students who are in Key Stage 4 and studying the particular subject.
- Read the subject details in this booklet carefully and ask if you need to know more.
- Opt for a balanced choice of subjects to keep future careers and study options open. A good balance now won't restrict your future options.



DONT'S

- Choose a subject because you like a particular teacher (or avoid a subject because you dislike a teacher) - it's likely you will have a different teacher next year and relationships with your teachers will grow.
- Choose a subject just because your friends are choosing it. It is a decision about your future and your friends may not be in the same group as you.
- Be misled by the title of a subject into thinking you need it for a career.

Bellerive offers an excellent range of option subjects but these can only run if enough students choose them. We cannot allow classes to be too busy either.

The School always does its best to provide you with your first choices, but if are unable to, we will discuss with you the reasons why and help you to consider your reserve subject options.

English

Qualification: GCSE
Duration of course: 2 Years
Examination Board: EDUQAS

What will I study?

GCSE English Language: Pupils will study all aspects of English including reading, writing, and spoken language. Pupils study extracts from 20th/21st century literature and 19th and 21st century non-fiction writing. They will also learn to write in different styles for different purposes and audiences.



How is the course structured?

Students will study the two GCSEs together, not as exclusive subjects, as many of the skills overlap. There will be regular exam practice in class to prepare students for their final examinations. Teachers will give students detailed and regular feedback on how to improve their work.

How will I be assessed?

Assessment will be in the form of 2 component examinations, which will assess reading and writing skills.

Component 1: 20th Century Literature Reading and Creative Prose Writing.

Length: 1 hour 45 minutes

Marks: 40% of the qualification

Section A (20%) Reading

- Understanding of one extract (about 60-100 lines) of literature from the 20th century assessed through a range of structural questions.

Section B (20%) Prose Writing.

One creative writing task selected from a choice of 4 titles.

Component 2: 19th and 21st Century Non – Fiction Reading and Transactional/Persuasive Writing.

Length: 2 hours

Marks: 60% of qualification.

Section A (30%) Reading

Understanding of two extracts (about 900-1200 words in total) of high-quality non-fiction writing, one from the 19th century, the other from the 21st century, assessed through a range of structured questions.

Section B (30%) Writing

Two compulsory transactional/persuasive writing tasks.

Component 3: Spoken Language

Non-exam assessment. Unweighted.

One presentation/speech, including responses to questions and feedback.

*Achievement in Spoken Language will be reported as part of the qualification, but it will not form part of the final mark and grade. Students will be awarded a **Pass, Merit or Distinction.***



English Literature

Qualification: GCSE
Duration of course: 2 Years
Examination Board: EDUQAS

What will I study?

Pupils will study a Shakespeare play, poetry from 1789 to the present day, a post -1914 Prose or Drama text, a 19th Century Prose text and unseen poetry from the 20th/21st century. *Students are not permitted to take copies of the set texts into the examination.*



How is the course structured?

Students will study the two GCSEs together, not as exclusive subjects, as many of the skills overlap. There will be regular exam practice in class to prepare students for their final examinations. Teachers will give students detailed and regular feedback on how to improve their work.

How will I be assessed?

Assessment will be in the form of 2 component examinations, which will assess reading and writing skills.

Component 1: Shakespeare and Poetry.

Length: 2 hours

Marks: 40% of qualification.

Section A (20%) Shakespeare.

One extract question and one essay question from the prescribed list.

Section B (20%) Poetry.

Two questions based on poems from the WJEC Eduqas Poetry Anthology, one of which involves comparison.

Component 2: Post-1914 Prose/Drama, 19th Century Prose and Unseen Poetry.

Length: 2 hours 30 minutes

Marks: (60% of qualification.)

Section A (20%) Post – 1914 Prose/Drama.

One source - based question on a post 1914 prose/drama text from the prescribed list.

Section B (20%) 19th Century Prose.

One source – based question on a 19th century prose text from the prescribed list.

Section C (20%) Unseen Poetry from the 20th/21st Century.

Two questions on unseen poems, one of which involves comparison

What can these qualifications lead to?

Clearly a good grade in English Language GCSE is a must for all pupils leaving school hoping to embark on any career in the world of work or apply for a place in Sixth Form. In Sixth Form, a good grade in English Language and English Literature will enable you to apply to study an A Level in English Language and/or Literature. Looking further ahead, these subjects are useful for those who intend to pursue a career in law, journalism, communications, media, management or teaching.



Mathematics

Qualification: GCSE

Duration of course: 2 Years

Examination Board: EDEXCEL

What will I study?

The content of the GCSE Mathematics is grouped into the topic areas of: Number, Algebra, Ratio, Proportion and Rates of Change, Geometry and Measures, Statistics and Probability

In this GCSE Mathematics course you will start with the basics, learning to solve numerical problems and make calculations. In year 10 you will learn about number systems and progress to algebraic equations, formulae, graphs and functions. Statistics and probability will also be covered. In year 11 you will continue to build upon these skills, with the introduction of more geometry and

How will I be assessed?

The GCSE will be entirely assessed by written examination, which means that no coursework will be expected from any student. There will be three papers. Each paper lasts 1 hour 30 minutes and will be out of 80 marks. Paper 1 is a non-calculator assessment and a calculator is allowed for Paper 2 and Paper 3. You will sit either the Foundation tier (grades 1 to 5) or the Higher tier (grades 4 to 9). The content outlined for each tier will be assessed across all three papers.

The table below illustrates the topic area weightings for the assessment of the Foundation tier and the assessment of the Higher tier.

Topic area	Foundation Weighting	Higher Weighting
Number	22-28%	12-18%
Algebra	17-23%	27-33%
Ratio,	22-28%	17-23%
Geometry	12-28%	17-23%
Statistics	12-18%	12-18%

What skills will I develop during the course?

Through studying Mathematics you will learn that it is about more than numbers: it's about thinking logically and being able to apply the principles you learn to everyday situations. It is about making decisions and solving problems.

GCSE Mathematics will teach you to collect and assess mathematical data and to use it to solve specific problems, then interpret and assess the results. You will develop techniques to extend upon the skills you learnt in years 7, 8 and 9 so that you can apply mathematical skills to real life situations.

What can these qualifications lead to?

A strong understanding of maths is useful whatever you do next—whether that's work, A levels or further study—because number skills are needed in everyday life and maths helps you develop problem-solving and decision-making. A good GCSE Maths grade (often 5/6+ alongside English) is important for many careers and helps support a wide range of subjects, especially the sciences and social sciences. The IMA's Maths Careers website shows how maths is used in lots of different jobs. If you want to take A level Mathematics, you'll usually need at least a grade 7, as the course builds on GCSE work and introduces new, challenging ideas linked to real-life situations.



Religious Education

Qualification: GCSE

Duration of course: 2 Years

Examination Board: EDUQAS

What will I study?

Over the two years, you will study:

- From the study of **Foundational Catholic Theology**: Origins and meanings, Good and evil
- From the study of **Applied Catholic Theology**: Life and death, Sin and forgiveness
- From the study of **Judaism**: Beliefs and teachings, Practices



How will I be assessed?

Paper 1: Foundational Catholic Theology

Time: 90 minute written exam

Marks: 90 marks (37.5% GCSE)

Paper 2: Applied Catholic Theology

Time: 90 minute written exam

Marks: 90 marks (37.5% GCSE)

Paper 3: Judaism

Time: 60 minute written exam

Marks: 60 marks (25% GCSE)



What skills will I develop during the course?

During the course you will develop a range of skills such as independent thinking. Through the completion of past paper questions you will be required to explain your opinions and the opinions of others and offer a critical approach to some issues.

What can these qualifications lead to?

A good number of students move on to studying RS at A-Level. Gaining a GCSE or A-Level in Religious Studies can open up many career and study opportunities such as social work, teaching and law.



Separate Science: Biology

Qualification: GCSE
Duration of course: 2 Years
Examination Board: AQA

What will I study?

Year 10: In Biology the topics studied are: Cell biology; Organisation; Infection and response and Bioenergetics.

Year 11: In Biology the topics studied are: Homeostasis and response; Inheritance, variation and evolution and Ecology.

Pupils' skills in working scientifically are developed throughout the GCSE course.

How will I be assessed?

This qualification is linear which means that all examinations will be sat at the end of Y11.

Biology GCSE – TWO 1 hour and 45 minutes examination, taken in the summer of Y11 (each worth 50% of the GCSE). Examinations will be at higher or foundation tier and will include multiple choice questions, structured, closed short answer and open response questions.

What skills will I develop during the course?

Pupils will be assessed on their ability to:

- (i) Demonstrate knowledge and understanding of: scientific ideas; scientific techniques and procedures,
- (ii) Apply knowledge and understanding of: scientific ideas; scientific enquiry, techniques and procedures and
- (iii) Analyse information and ideas to: interpret and evaluate; make judgments and draw conclusions; develop and improve experimental procedures.

Pupils will complete a wide range of experimental work during the course but must complete the ten AQA 'Required Practicals' in Biology, as questions will be set on these on the written papers.



Is the course right for me?

This course suits pupils who are fascinated about living things and how they function and interact. Pupils wishing to take Biology GCSE will have a keen interest in the subject and must be prepared to work very hard as there is extended Biology content and topics are covered in great depth.

What can these qualifications lead to?

Success in GCSE Biology at grade 6 or above allows progression onto Level 3 courses including GCE A' Levels in Biology. Many students taking A' Level Biology go on to study biological subjects at university including medicine, dentistry, biochemistry and nursing.



Separate Science: Chemistry

Qualification: GCSE
Duration of course: 2 Years
Examination Board: AQA

What will I study?

Year 10: In Chemistry the topics covered are: Atomic structure and the periodic table; Bonding, structure, and the properties of matter; Quantitative chemistry, Chemical changes and Energy changes.

Year 11: In Chemistry the topics covered are: The rate and extent of chemical change; Organic chemistry; Chemical analysis, Chemistry of the atmosphere and Using resources.

Pupils' skills in working scientifically are developed throughout the GCSE course.

How will I be assessed?

This qualification is linear which means that all examinations will be sat at the end of Y11.

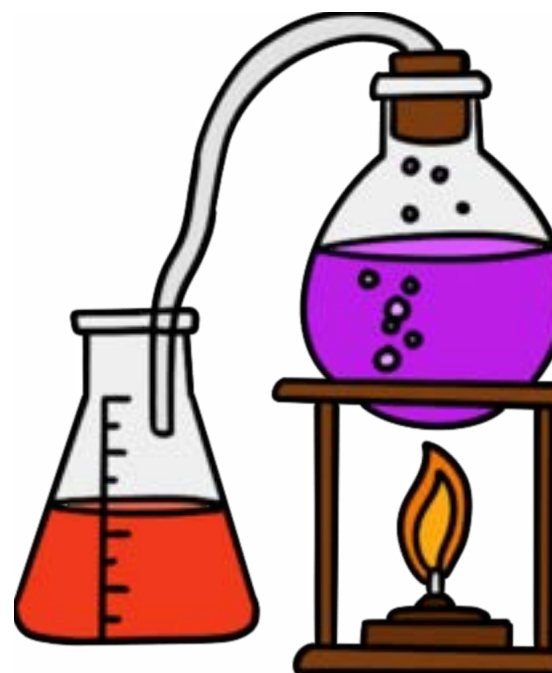
Chemistry GCSE – TWO 1 hour and 45 minutes examination, taken in the summer of Y11 (each worth 50% of the GCSE). Examinations will be at higher or foundation tier and will include multiple choice questions, structured, closed short answer and open response questions.

What skills will I develop during the course?

Pupils will be assessed on their ability to:

- (i) Demonstrate knowledge and understanding of: scientific ideas; scientific techniques and procedures,
- (ii) Apply knowledge and understanding of: scientific ideas; scientific enquiry, techniques and procedures and
- (iii) Analyse information and ideas to: interpret and evaluate; make judgments and draw conclusions; develop and improve experimental procedures.

Pupils will complete a wide range of experimental work during the course but must complete the eight AQA 'Required Practicals' in Chemistry, as questions will be set on these on the written papers.



Is the course right for me?

This course suits pupils who are interested in the properties of materials and the scientific ideas behind them. Pupils must be able to apply ideas to new situations and be confident during experiment work. Pupils wishing to take Chemistry GCSE will have a keen interest in the subject and must be prepared to work very hard as there is extended Chemistry content and topics are covered in great depth.

What can these qualifications lead to?

Success in GCSE Chemistry at grade 6 or above allows progression onto Level 3 courses including GCE A' Levels in GCE A' Level in Chemistry. Many students taking A' Level Chemistry go on to study at university and take degree courses in Chemistry, Biochemistry and Chemical Engineering. A' Level Chemistry is a requirement of all medicine, dentistry and veterinary science courses.



Separate Science: Physics

Qualification: GCSE
Duration of course: 2 Years
Examination Board: AQA

What will I study?

Year 10: In Physics the topics studied are: Energy, Electricity, Particle model of matter and Atomic structure.

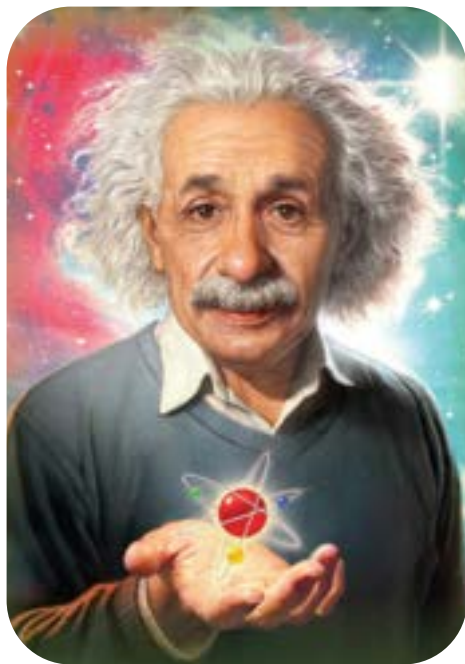
Year 11: In Physics the topics studied are: Forces, Waves, Magnetism and electromagnetism and Space physics.

Pupils' skills in working scientifically are developed throughout the GCSE course.

How will I be assessed?

This qualification is linear which means that all examinations will be sat at the end of Y11.

Physics GCSE – TWO 1 hour and 45 minutes examination, taken in the summer of Y11 (each worth 50% of the GCSE). Examinations will be at higher or foundation tier and will include multiple choice questions, structured, closed short answer and open response questions.



What skills will I develop during the course?

Pupils will be assessed on their ability to:

- (i) Demonstrate knowledge and understanding of: scientific ideas; scientific techniques and procedures,
- (ii) Apply knowledge and understanding of: scientific ideas; scientific enquiry, techniques and procedures and
- (iii) Analyse information and ideas to: interpret and evaluate; make judgments and draw conclusions; develop and improve experimental procedures.

Pupils will complete a wide range of experimental work during the course but must complete the ten AQA 'Required Practicals' in Physics, as questions will be set on these on the written papers.

Is the course right for me?

This course suits pupils who are interested in how things work and the scientific principles behind them. Pupils must be able to apply ideas to new situations and be confident in the use of mathematics. Pupils wishing to take Physics GCSE will have a keen interest in the subject and must be prepared to work very hard as there is extended Physics content and topics are covered in great depth.

What can these qualifications lead to?

Success in GCSE Physics at grade 6 or above allows progression onto Level 3 courses including GCE A' Levels in Physics. Many students taking A' Level Physics go on to study at university and take degree courses in Physics, Astrophysics, Medical Physics or Engineering.



Combined Science

Qualification: GCSE
Duration of course: 2 Years
Examination Board: AQA

What will I study?

In **Biology** the topics studied are: Cell biology, Organisation, Infection and response, Bioenergetics, Homeostasis and response, Inheritance, variation and evolution and Ecology.

In **Chemistry** the topics studied are: Atomic structure and the periodic table, Bonding, structure, and the properties of matter, Quantitative chemistry, Chemical changes, Energy changes, The rate and extent of chemical change, Organic chemistry, Chemical analysis, Chemistry of the atmosphere and Using resources.

In **Physics** the topics studied are: Forces, Energy, Waves, Electricity, Magnetism and electromagnetism, Particle model of matter and Atomic structure.

How will I be assessed?

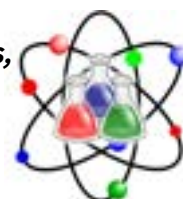
This qualification is linear which means that all examinations will be sat at the end of Y11. In total there will be SIX examinations for Combined Science:

Biology 1 and Biology 2 – TWO 1 hour and 15 minutes examination, taken in the summer of Y11 (each worth 16.7% of the double GCSE).

Chemistry 1 and Chemistry 2 – TWO 1 hour and 15 minutes examination, taken in the summer of Y11 (each worth 16.7% of the double GCSE).

Physics 1 and Physics 2 – TWO 1 hour and 15 minutes examination, taken in the summer of Y11 (each worth 16.7% of the double GCSE).

Examinations will be at higher or foundation tier and will include multiple choice questions, structured, closed short answer and open response questions.



What skills will I develop during the course?

Pupils will be assessed on their ability to:

- (i) Demonstrate knowledge and understanding of: scientific ideas; scientific techniques and procedures,
- (ii) Apply knowledge and understanding of: scientific ideas; scientific enquiry, techniques and procedures and
- (iii) Analyse information and ideas to: interpret and evaluate; make judgments and draw conclusions; develop and improve experimental procedures.

Pupils will complete a wide range of experimental work during the course but must complete the ten AQA 'Required Practicals' in Physics, as questions will be set on these on the written papers.

What can these qualifications lead to?

Success in GCSE Sciences (Combined Science) at grades 6/6 or above allows progression onto Level 3 courses including GCE A' Levels in any of the Sciences (Biology, Chemistry and Physics).

Pupils who pass at grades 5/5 or above, may wish to consider the Level 3 Applied Science course.



Art and Design

Qualification: GCSE
Duration of course: 2 Years
Examination Board: AQA

What will I study?

Students will critically explore the work of artists and designers while developing their own ideas through practical and creative activities. They will experiment with a wide range of materials and techniques, whether digital, non-digital, or a combination of both, to find the best way to express their intentions.

Throughout the course, students will demonstrate knowledge of different methods, processes and artistic approaches by applying them in their own work. They will also evaluate their progress by reflecting on what they have created, considering what has been successful, and identifying ways to improve their outcomes so they meet the aims of the project.

How will I be assessed?

This GCSE Art and Design is made up of two units:

- Unit 1: Personal Portfolio: 60% - internally set project and marked by teachers and external examiners
- Unit 2: Externally set Assignment: 40% - externally set theme and marked by teachers and external examiners

Both units are assessed using four Assessment Objectives. Research, Experiment, Develop and Present. Each unit is assessed separately out of 96 marks. 24 marks for each Assessment Objective. GCSE Art will be assessed using 1-9 mark scheme.

What skills will I learn on this course?

The main aim of the course is to develop your visual language skills, skills that are relevant to a wide variety of creative job opportunities. You will develop a wide range of practical skills through experimenting with appropriate media, materials and techniques to explore the potential of ideas. Students will carry out appropriate research from primary and contextual sources, so developing research skills vital to a wide range of subjects in further education. They will analyse and evaluate their own and the work of other artists gaining additional transferable skills.

Is the course right for me?

You should have a commitment to, and love of Art and feel motivated to develop your visual skills and express your ideas in working through projects and assignments. You will have enjoyed exploring art materials and processes at Key Stage 3 and will be keen to develop your knowledge of contemporary and historical Art and Design. You will be creative, enthusiastic and imaginative; willing to experiment and take risks in your work. You will need to be committed to completing tasks in your own time.

What can the course lead to?

A level Art and Design is the logical progression from GCSE before looking for further opportunities in a creative field such as Fashion Design, Fashion Illustration or Promotion, Jewellery Design, Buying and Marketing or Interior Design, Graphic Design, Illustration and careers in Advertising.



GCSE Business

Qualification: BTEC
Duration of course: 2 Years
Examination Board: OCR

What will I study?

Business Paper 1 – Business Activity, Marketing and People
Business Paper 2- Operations, Finance and Influences on Business

How will I be assessed?

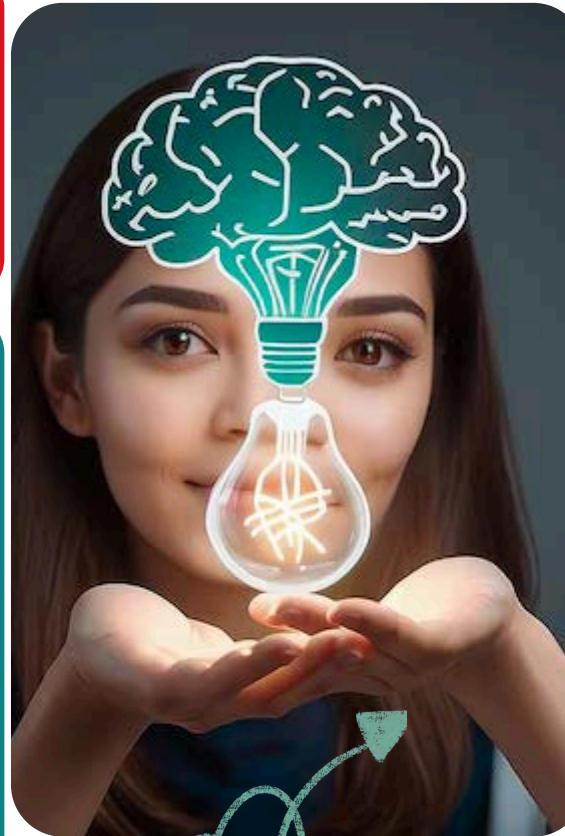
2 examinations – Both papers are worth 50% of the GCSE. Each paper is an hour and 30 minutes long and worth 80 marks each.

What skills will I learn on this course?

The course will develop entrepreneurial thinking, commercial awareness, communication and literacy skills, teamwork and leadership as well as financial literacy.

Is the course right for me?

- You enjoy real-world application: Enjoy learning about brands, how they make money, why they make certain decisions moving forward.
- You must be prepared to learn and build on skills. The course builds employability skills, great for keeping your options open and remaining versatile.
- You should also be prepared to undertake extended writing tasks and lots of past paper practice questions.



What can the course lead to?

A Level Business and BTEC Business is a facilitating subject aiding entry into Russell Group Universities for a wide range of courses. Both universities and employers value Business for the content and skills developed whilst studying the course.

BTEC Business

Qualification: BTEC
Duration of course: 2 Years
Examination Board: EDEXCEL

What will I study?

With BTECs, students develop knowledge and understanding by applying their learning and skills in a work-related context. BTECs are skills-based qualifications that will help students to develop the practical real-world knowledge, experience and skills that they need to progress and succeed throughout their academic and professional life.

Units offered include:

Unit One: Exploring Enterprises (Portfolio)

Unit Two: Planning for and Pitching an enterprise activity (Portfolio)

Unit Three: Promotion and Finance for Business (External Examination)

How will I be assessed?

This BTEC Award has 2 units that the centre assesses (internally). Preparation for controlled assessment is undertaken in lesson and then students are given a set window of 6 hours to complete the written assessment in class, under controlled conditions, which is marked by the teacher then moderated by the exam board. The third unit is a 2 hour external examination set and marked by Pearson.

What skills will I learn on this course?

On this course, you'll get to learn and practise real-life business skills. You'll work on your own business idea and learn how to research it, plan it, explain it to others, and then think about how it went.

You will learn how to:

- Plan a business idea by doing things like market research and money management.
- Communicate well and solve problems when working on your project.
- Understand what makes a good business and a good entrepreneur, and what things can help or hurt a business.
- Work in a responsible and thoughtful way, checking how well your business idea is doing and thinking about how you can improve your own skills.



What can the course lead to?

A Level 2 BTEC Business qualification helps you learn practical business skills and is equal to GCSE level. It can lead to Level 3 courses like BTEC Business or A-levels, apprenticeships in areas such as customer service or retail, or even starting your first job with useful workplace skills.



Dance

Qualification: GCSE
Duration of course: 2 Years
Examination Board: AQA

What will I study?

Taking GCSE Dance can equip you with many lifelong skills, allowing you to build confidence and develop your physical and mental wellbeing.

The two-year course includes both practical and theoretical elements of dance and consists of coursework and examination. Students will take part in theory (*written*) classes and very physical practical dance lessons to equip them with all the knowledge and skills needed to complete the course. Students will spend Year 10 building skills in the dance studio and classroom to equip them with the knowledge, technique, and confidence to complete year 11 practical coursework and examinations.

How will I be assessed?

Component 1 (60%) Performance and Choreography.

- 2 Set Phrases - You will learn and perform 2 set phrases accurately from a selection of 4. These will be performed and assessed in year 11.
- Performance in a duet/trio. -The two phrases not performed in the solo will be used as a starting point to create and develop a duet/trio performance. This will be performed and assessed in year 11.
- Choreography- In year 11 you will be given a list of different stimuli. You will research each of these stimuli and use it as a starting point to create a solo/group choreography. To accompany your choreography you will write a program note of 120-150 words.

Component 2 (40%) Dance appreciation: 1 hour 30 minutes.

The Written Exam Paper will consist of three parts:

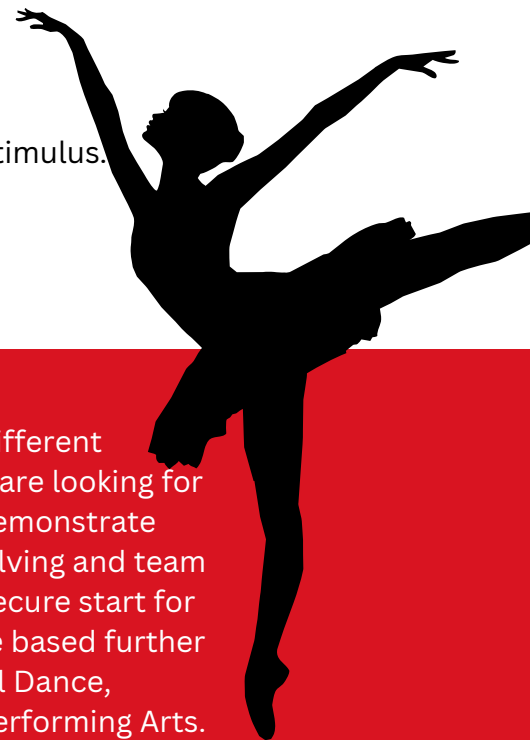
- Choreographic processes and performance skills in a hypothetical stimulus.
- Critical appreciation of own work.
- Critical appreciation of others work through the Anthology.

This examination takes place at the end of Year 11



What can the course lead to?

Dance can open the door to many different careers: universities and employers are looking for well-rounded individuals who can demonstrate creativity, commitment, problem solving and team skills. GCSE Dance also provides a secure start for anyone wishing to take performance based further education in courses such as A Level Dance, Musical Theatre and Level 3 BTEC Performing Arts. Past pupils have gone on to study a myriad of subjects in higher education including BA Hons Musical Theatre at The Hammond.



Drama

Qualification: GCSE
Duration of course: 2 Years
Examination Board: AQA

What will I study?

GCSE Drama encourages students to develop critical thinking skills and become effective and independent learners. With the focus on working imaginatively, collaborating creatively and communicating effectively, GCSE Drama helps students develop an understanding of many creative and challenging activities.

In Drama we understand the work of professional theatre makers, analyse and evaluate our own work, show appreciation of live performances, study theatre history, apply understanding of technical theatre and grow in confidence together.

How will I be assessed?

The GCSE Drama specification requires students to complete three components:

Component 1- 40% - 1 hour 45 minutes - 80 marks. Externally set and marked

The 'Understanding Drama' written exam comprises of three compulsory sections:

- Understanding Theatre Roles and Responsibilities
- Study of a set text (Noughts and Crosses)
- Live theatre production

Component 2- Devising Drama constitutes 40% of the GCSE. It is marked by teachers and moderated by AQA.

This is a practical component in which students are assessed on their ability to create and develop ideas to communicate meaning for theatrical performance, apply theatrical skills to realise artistic intentions in live performance and analyse and evaluate their own work. For this component students are required to complete the following two assessment tasks:

- produce an individual Devising log (marked out of 60) documenting the devising process
- Contribute to a final devised duologue or group performance which is marked out of 20.

Component 3- Texts in practice constitutes 20% of the GCSE. It is marked by a visiting examiner from AQA.

This component is a practical component in which students are assessed on their ability to apply theatrical skills to realise artistic intentions in live performance. For this component students must complete two assessment tasks:

- study and present a key extract (monologue, duologue or group performance)
- study and present a second key extract (monologue, duologue or group performance) from the same play.



What can the course lead to?

GCSE Drama provides a solid foundation for the majority of careers as well as a secure start for anyone wishing to take performance based further education in courses such as Drama and Theatre Studies and Level 3 BTEC Performing Arts. Past pupils have gone on to study a myriad of subjects in higher education including Ba Hons Musical Theatre at The Hammond, Musical Theatre BTEC at Liverpool Institute for Performing Arts and Acting BTEC at Liverpool Media Academy.



Qualification: GCSE

Duration of course: 2 Years

Examination Board: EDUQAS

Food Preparation and Nutrition

What will I study?

- Food commodities
- Principles of Nutrition
- Diet and good health
- The science of food
- Where food comes from
- Cooking and food preparation



How will I be assessed?

Assessment : 50% - Non-examination Assessment (made up of two assessments – see below), 50% - Written examination paper (1 hour, 45 minutes)

- Assessment 1 is worth 15%. This will be based on a scientific food experiment which will assess your knowledge, skills and understanding in relation to scientific principles underlying the preparation and cooking of food.
- Assessment 2 is worth 35%. This will involve you preparing, cooking and presenting a menu.

What skills will I develop?

Students will learn how to plan, prepare and cook food safely and confidently, using a range of ingredients, techniques and kitchen equipment. They will also develop a strong understanding of how food works – including its nutritional value, chemical properties, and the factors that affect taste, texture and safety.

The course explores the links between diet, nutrition and health, helping students understand how food choices can affect the body and mind. They will also look at how economic, environmental, ethical and cultural factors influence what we eat.

Students will have the chance to experiment with ingredients from different cuisines, both British and international, to create new dishes or adapt existing recipes.



What can the course lead to?

This course would be helpful in the following careers:

- Hospitality and Catering Industry
- Teaching
- Dietitian / Nutritionist
- Chef

Is the course right for me?

If you are interested in cooking, baking, dealing with food and learning one of the most valuable life skills then you will love this course.



Geography

Qualification: GCSE
Duration of course: 2 Years
Examination Board: AQA

What will I study?

Paper 1: Living with the physical environment
Includes - The challenge of natural hazards, Physical landscapes in the UK, and The living world.

Paper 2: Challenges in the human environment
Includes - Urban issues and challenges, The changing economic world, The challenge of resource management.

Paper 3: Geographical applications
Includes - Issue evaluation, Fieldwork, Geographical skills.



How will I be assessed?

3 examinations – 3 x 1 hour 30 minutes examinations (Paper 1 and 2 being worth 35%, and Paper 3 being worth 30% of the final grade).

What skills will I develop during the course?

Skills feature strongly; examples include: presentation and analysis of information in a variety of formats (e.g. graphical, cartographic and images), discussion, decision-making and evaluation skills.

Is the course right for me?

- Anyone with an interest in the topics covered in Year 7 to 9 and who has a desire to be informed about the world around them.
- You must be prepared to learn key words, concepts and examples given to you in the revision materials;
- You should also be prepared to undertake extended writing tasks and lots of past paper practice questions



What can the course lead to?

A Level Geography is a facilitating subject aiding entry into Russell Group Universities for a wide range of courses. Both universities and employers value Geography for the content and skills developed whilst studying the course.

Graphics

Qualification: GCSE
Duration of course: 2 Years
Examination Board: AQA

What will I study?

AQA GCSE Graphics teaches students how to communicate ideas visually through areas such as advertising, illustration, typography, packaging, and digital design. Students explore how designers use visual elements, colour, line, form, tone, texture, shape, pattern and composition, to communicate meaning and target specific audiences. Throughout the course, students learn to develop ideas through investigations, drawing inspiration from a range of sources linked to commercial, social or creative industry contexts. They deepen their understanding by researching themes, analysing existing work, and exploring how design responds to a brief.

How will I be assessed?

Component 1: Portfolio (60%) – Internally Assessed

- This component consists of a portfolio of work showing a sustained project and additional pieces in support of this.

Component 2: Externally Set Assignment (40%) – Externally Assessed

- Students respond to a brief set by AQA.
- Includes a preparatory period followed by 10 hours of supervised time to produce a final outcome.

What skills will I develop?

The course encourages students not only to develop technical skills but also to think critically, problem-solve creatively, and produce purposeful designs that meet the needs of a client or audience. By the end of the course, they are able to present personal and meaningful graphic outcomes that demonstrate confidence, creativity, and thoughtful visual communication

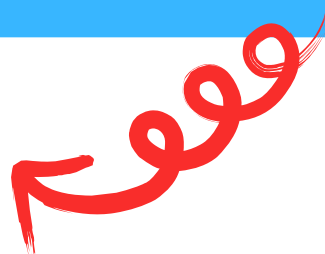


Is this course right for me?

Ideal for creative, visually minded students who enjoy problem-solving, experimenting with digital and traditional media, exploring ideas, and designing purposeful visuals. You need to be organised, committed and prepared to work independently.

What can the course lead to?

A GCSE in Graphics can lead to creative and digital careers such as graphic design, illustration, animation, advertising, web and app design, photography, UX design, and other visual communication roles.



Health and Social Care

Qualification: BTEC
Duration of course: 2 Years
Examination Board: EDEXCEL

What will I study?

This course explores how people grow and develop throughout their lives, how different factors and life events affect them, and how individuals cope with change. You'll also learn how the health and social care system works, who provides these services, why people need them, and the care values that ensure everyone is treated safely and respectfully.

You will study what it means to be healthy, what influences health and wellbeing, and how to assess someone's health. You'll then create a health and wellbeing improvement plan, thinking about goals, support services, and possible challenges.

How will I be assessed?

- **Component 1 (30%)** – This component develops your understanding of how people grow and change across their lives, and how different factors and life events affect their development. (Internally assessed)
- **Component 2 (30%)** – This component introduces you to health and social care services, why people use them, and the care values that ensure individuals receive safe, respectful and effective support. (Internally assessed)
- **Component 3 (40%)** – This **externally assessed exam** teaches you how to assess someone's health and wellbeing and create a realistic plan to help improve it.

What skills will I develop?

You will develop a wide range of transferable skills such as self-reflection, communication, teamwork, time management, problem-solving, working independently and research skills, which you will find very useful when you progress to Level 3 courses.



Is this course right for me?

You need to be organised, committed and interested in other people's health and wellbeing, as Level 2 Health and Social Care requires practical work, independent study and a genuine interest in understanding and supporting others' wellbeing.

What can the course lead to?

You may wish to continue onto the AAQ BTEC National Extended Certificate in Health and Social Care, which is a good route for those hoping to pursue a career in health or social care.



History

Qualification: GCSE
Duration of course: 2 Years
Examination Board: AQA

What will I study?

The GCSE History content comprises the following elements:

1. A period study: Germany, 1890–1945: Democracy and dictatorship.
2. A wider world depth study: Conflict and tension, 1918–1939.
3. A thematic study of Britain: Health and the people: c1000 to the present day.
4. British depth study including the historic environment of Elizabethan England, c1568–1603

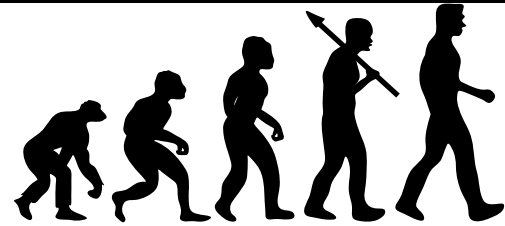
How will I be assessed?

Paper 1: Understanding the modern world (50%)

- Section A: Period study: Germany, 1890–1945 Democracy and dictatorship.
- Section B: Wider world depth studies: Conflict and tension, 1918–1939.

Paper 2: Shaping the nation (50%)

- Section A: Thematic studies Britain: Health and the people: c1000 to the present day.
- Section B: British depth studies with the historic environment of Elizabethan England, c1568–1603.



Each paper is worth 50% of the overall course of study. Both are written exams to be completed in 2 hours. There are 84 marks (including four marks for spelling, punctuation and grammar on each paper).

What skills will I develop?

You will be asked to display skills of chronological understanding, independent thinking and analysis. You will be required to show your understanding in a range of written tasks with the emphasis on explaining and justifying your answers.

Is the course right for me?

If you opt for GCSE History, you must be prepared for the written demands of the subject. Ideally you will have a keen interest in History and should be prepared to ask and answer a range of complex historical questions. This subject also requires independent revision and reading outside of lesson time.



What can the course lead to?

Many students progress to A Level History and qualifications in History will open up career opportunities in law, journalism, teaching and a wide range of other professions.



ICT

Qualification: BTEC
Duration of course: 2 Years
Examination Board: EDEXCEL

What will I study?

This qualification consists of three components:

- **Component 1:** Exploring user interface design principles and project planning techniques. (Internally assessed, coursework element)
- **Component 2:** Collecting, presenting and interpreting data. (Internally assessed, coursework element)
- **Component 3:** Effective digital working practices. (Externally assessed, examination, synoptic element)



How will I be assessed?

Components 1 and 2 are controlled assessments which are a non-exam internal assessment delivered through Pearson-set assignments. These assignments are set by Pearson, marked by the centre and moderated by Pearson. Sat in the classroom under controlled supervision. Component 3 is an externally examined unit, 1 hour 30 minute paper, which is set and marked by Pearson.



What skills will I develop?

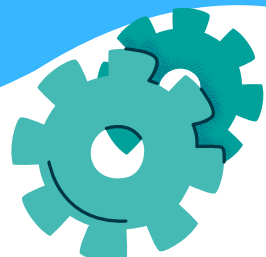
You will develop and practice a combination of research, planning, analytical, and developmental skills, using them fully to create high quality end products. You will learn about and develop your own computer interface for a given problem. You will then discuss and evaluate your progress identifying further improvements.

Is this course right for me?

BTEC qualifications are ideal for students who want the opportunity to explore and acquire a broad understanding and knowledge of the creative digital industries, and the ability to apply that knowledge in practical contexts. The course has a high coursework content which is worked on right through Year 10 and partly into Year 11. This course allows you to develop lifelong skills suitable for use in any subject which may lead to a career in the creative and new media industry.

What can the course lead to?

This course can lead to ICT study at Bellerive Sixth Form and other further education colleges in order to progress into careers in teaching, game making, programming, multimedia and web design. The subject of ICT compliments many other subjects as it is a major skill requirement in university, industry and other professions.



Music

Qualification: GCSE
Duration of course: 2 Years
Examination Board: EDUQAS

What will I study?

- Western Classical tradition
- Musical Theatre
- Jazz and Blues
- Film Music
- Rock and Pop
- Fusion

Set works include: Bach 'Badinerie' and Toto 'Africa'



Year 10: You will study one of the set works listed above and 3 of the 6 musical styles. You will also compose a piece of music in your chosen style using any instruments and/or voices. You will be asked to perform at least 3 solos during year 10 on your chosen instrument or voice.

Year 11: You will study the second set work and the other 3 musical styles. You will also compose a second piece of music. You will continue to develop your performing skills throughout year 11 including solo and group pieces.

How will I be assessed?

Composing 30% (coursework)

Performing 30% (coursework)

Listening and Appraising 40% (Examination)



What skills will I develop?

You will develop your confidence as a performer throughout the course. You will also learn to use music technology when composing and notating music. Your listening skills will also improve and you will learn to describe and analyse music in some detail. Studying music at GCSE also helps your skills in team work, cooperation, responsibility, discipline and social skills.



Is this course right for me?

GCSE Music is for those pupils who show a real passion for music and performing. Students have to perform solo for their exam, so the course is suited to those who are prepared to sing or play their instrument in front of a small group. To achieve the highest grades (9- 5), pupils are expected to play or sing a minimum of Grade 3 pieces. Most songs from musicals are at least this level, and very often higher. In addition, you must be prepared to participate in extra-curricular activities, such as Choir and Orchestra, as these benefit your examination grade. If you are in any doubt, please speak to Ms Winstanley.



What can the course lead to?

Studying Music helps you develop important life skills like teamwork, confidence, responsibility and self-discipline. These skills are useful whether or not you choose a career in music.

If you're thinking about taking A-Level Music or Music Technology, GCSE Music is strongly recommended. It can also lead to a wide range of careers in the music industry, such as broadcasting, music journalism, music therapy, concert promotion, sound engineering, performance and teaching.

Spanish

Qualification: GCSE
Duration of course: 2 Years
Examination Board: AQA

What will I study?

- Theme 1: People and lifestyle
- Theme 2: Popular culture
- Theme 3: Communication and the world around us

How will I be assessed?

Linear exam – no controlled assessment

- 25% of marks for each of the four skills: listening, speaking, reading and writing
- Oral assessment completed by class teacher in April of exam year
- Foundation and Higher Tier papers

What skills will I develop?

Studying a language gives you a valuable life skill that employers really appreciate. It helps you communicate clearly, think creatively, and solve problems by understanding different viewpoints. Learning a language also builds cultural awareness, helping you work well with people from other countries.

You'll gain a real sense of achievement as you learn to express yourself confidently in another language, and it's a very social subject, perfect for students who enjoy communicating with others.

Language skills also give you an edge in the job market, open up opportunities to travel or work abroad, and combine well with almost any subject for future study.

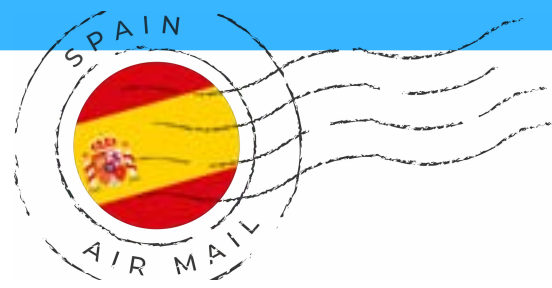


Is the course right for me?

If you opt for GCSE Spanish, you must be prepared for the demands of the subject. Not only will you be expected to work very hard in class but also carry out plenty of independent studying at home. The course requires a great deal of revision of grammar and vocabulary along with preparation for the speaking element of the course.

What can the course lead to?

Many students study A Level Spanish and then continue to study it with other disciplines at degree level. Your job prospects will be considerably better if you possess a language at GCSE or beyond. Look at the skills you acquire by studying languages above!



BTEC SPORT

Qualification: BTEC
Duration of course: 2 Years
Examination Board: EDEXCEL

What will I study?

The Tech Award gives learners the opportunity to develop sector-specific applied knowledge and skills through realistic vocational contexts. Learners will have the opportunity to develop applied knowledge and skills in the following areas:

- Investigating provisions for sport including equipment and facilities to enhance sport
- Planning and delivery of sport drills and sessions
- Fitness for sport including fitness testing and methodology.



Component 1: Preparing Participants to Take Part in Sport and Physical Activity

Component 2: Taking Part and Improving Other Participants Sporting Performance

Component 3: Developing Fitness to Improve Other Participants Performance in Sport and Physical Activity

How will I be assessed?

The course consists of two internal assessments, and one externally assessed component. The internal assessments are a mixture of written work, leadership and practical ability.

What skills will I develop?

You will develop practical skills, tactical knowledge and awareness, knowledge and understanding of rules in the practical activities, analytical skills, leadership and officiating skills.

In the coursework elements you will develop your literacy and writing skills to improve your proficiency in deciphering and answering the questions and scenarios.



Is this course right for me?

BTEC Sport is a practical course for students who want to learn about the sports industry, different types of physical activity, and the equipment and technology used in sport. **To take this course, you should enjoy sport, be committed, and show good self-discipline and determination.**

You'll need to take part in practical sessions, show leadership skills, and get involved in extracurricular activities. **You will also be expected to complete independent research and revision to support the written parts of the course.**

What can the course lead to?

Many students progress to BTEC L3 Sport and qualifications in PE will open up career opportunities in teaching, the fitness industry, physiotherapy, sports psychology, coaching, sports analysts, officiating and a wide range of other professions.



Qualification: BTEC
Duration of course: 2 Years
Examination Board: EDEXCEL

Travel and Tourism

What will I study?

The BTEC Level 2 Award in Travel and Tourism will help you understand the dynamic and growing travel and tourism industry. You will explore:

- **Component 1: Travel and Tourism Organisations and Destinations**
Understand the different types of travel and tourism organisations, their roles, and how they work together. Explore popular destinations and the appeal they have to different types of tourists.
- **Component 2: Customer Needs in Travel and Tourism**
Investigate how travel and tourism organisations meet the needs of different customers and adapt to meet changing demands.
- **Component 3: Influences on Global Travel and Tourism (Externally Assessed)**
Learn about the factors that influence travel and tourism, including economic, environmental, and political factors, as well as the impact of global events.

How will I be assessed?

The course is assessed through a combination of internal and external assessments:

- Two internally assessed assignments for Components 1 and 2 (60% of the final grade).
- One externally assessed exam for Component 3 (40% of the final grade).

What skills will I develop?

- Research and analytical skills to explore travel and tourism organisations and their operations.
- Customer service and communication skills to understand and address customer needs.
- Decision-making and evaluation skills to assess the impact of events and trends on the industry.

Is this course right for me?

This course is suitable for anyone with a keen interest in travel, tourism, and global destinations

- You should enjoy both practical and theoretical work and be willing to research and analyse real-world examples.
- Be prepared to work on coursework assignments, learn industry-specific terminology, and complete an external exam.

What can this course lead to?

The BTEC Level 2 Award in Travel and Tourism provides an excellent foundation for progression into further study, such as:

- Level 3 Travel and Tourism qualifications (available in Sixth Form) or apprenticeships in the industry.
- Careers in travel agencies, airlines, tourism management, and event planning.
- This qualification will also develop transferable skills that are highly valued in many employment sectors.



Option A	Option B	Option C
GCSE History	GCSE Spanish	GCSE Art
GCSE Geography	GCSE Graphics	GCSE/BTEC Business
Travel and Tourism(BTEC)	GCSE Drama	GCSE Dance
GCSE Music	BTEC Sport	GCSE Food Technology
ICT(BTEC)	Health and Social Care (BTEC)	Separate Sciences (GCSEs in Biology, Chemistry, Physics)
	GCSE/BTEC Business	Health and Social Care(BTEC)